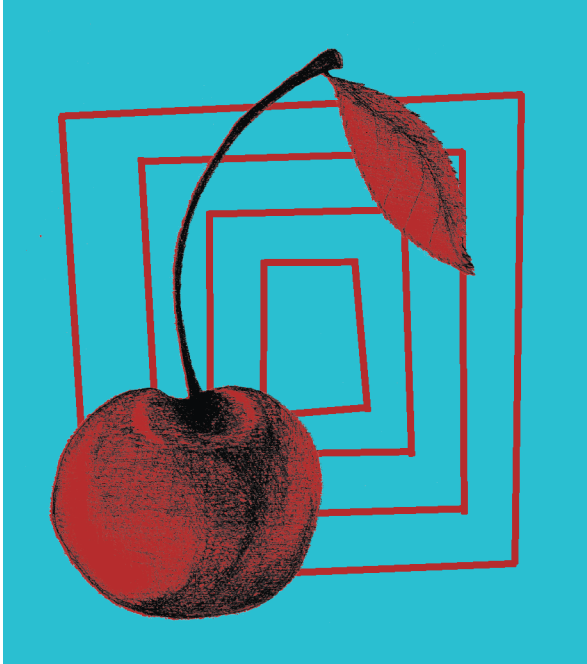


C H E R R Y H O U S E



C H E R R Y H O U S E 2019 | RED WINE | Paso Robles

Produced and bottled by Villa Creek Cellars
Paso Robles, CA

GOVERNMENT WARNING: ACCORDING TO THE SURGEON GENERAL, WOMEN SHOULD NOT DRINK ALCOHOLIC BEVERAGES DURING PREGNANCY BECAUSE OF THE RISK OF BIRTH DEFECTS. (2) CONSUMPTION OF ALCOHOLIC BEVERAGES IMPAIRS YOUR ABILITY TO DRIVE A CAR OR OPERATE MACHINERY, AND MAY CAUSE HEALTH PROBLEMS.
ALC. BY VOL. 14.5% CONTAINS SULFITES 750 ML



C H E R R Y H O U S E R E D , 2 0 1 9

BLEND: 45% Grenache, 45% Carignan, 10% Mourvèdre

APPELLATION: Paso Robles AVA (Adelaida district)

HARVEST: September 5th - October 19th, 2019

VINIFICATION: 100% destemmed, native yeast fermentation in concrete and stainless steel for three weeks prior to a gentle pressing into neutral 500 liter puncheons.

TASTING NOTES:

Aromatics - Black Cherry, plum, tar, strawberry jam, saffron, cherry blossom, cardamom.

Palate Impression - Supple, blueberry, black cherry, anise, smoke, Chinese five spice; fine grained tannins and builds throughout.

Acidity - More bass than treble.

Oak Impression - Present but in the back seat.

ABV: 14.5%

PH: 3.46

TA: 6.75gr/ltr.

RS: 1.2 gr/ltr.

BOTTLED: 2.8.2021